

Name: \_\_\_\_\_

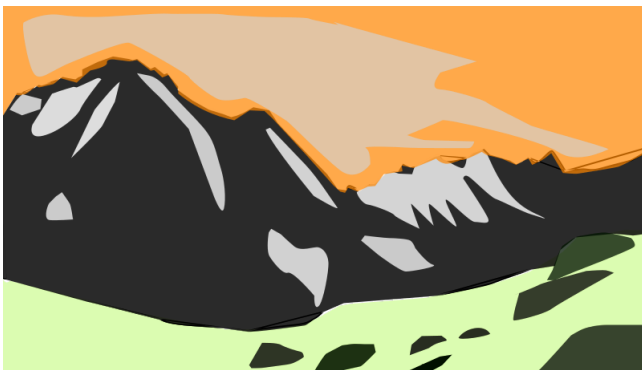
Hour: \_\_\_\_\_

## Explaining Changes to the Earth's Surface

Fast Changes		Slow Changes	
<b>V</b>	<b>Volcanic Eruptions –</b>  Landforms:  Example: Hawaii  Creates: New _____ as magma rises from the mantle.	<b>W</b>	<b>Weathering –</b>  Landforms: Cliffs and Canyons  Agents/Causes: wind, waves, rain, and biological activities.
<b>E</b>	<b>Earthquakes –</b>  Creates: _____ lines between continental crusts.  Occurs at: _____ plate boundaries.	<b>E</b>	<b>Erosion –</b>  Landforms:  Agents/Causes:  Force Present:

**Learning Objective:** Construct an explanation based on evidence for how geoscience processes have changed Earth's surface at varying time and spatial scales.

<p><b>L</b></p>	<p><b>Landslides –</b></p> <p>Caused By:</p> <p>They happen most in these areas:</p>	<p><b>D</b></p>	<p><b>Deposition –</b></p> <p>Landforms:</p> <ul style="list-style-type: none"> <li>- Sand dunes</li> <li>- Deltas</li> </ul> <p>Agents/Causes:</p>
<p><b>T</b></p>	<p><b>Tsunamis –</b></p> <p>Caused By:</p> <p>Effects on Land:</p>	<p><b>Bellringer:</b></p> <p>Describe how one of these geologic processes has constructed and/or changed the surface of the Earth over time.</p>	



Name 3 people in our class that you would be **successful** sitting next to if we got a new seating chart:

- 1.
- 2.
- 3.

**Learning Objective:** Construct an explanation based on evidence for how geoscience processes have changed Earth's surface at varying time and spatial scales.